



# OAVT Public Health Rabies Response Program

## Post Collection Info Sheet for Veterinary Hospitals and Animal Shelters

### RVTs Helping In The Community

Registered Veterinary Technicians (RVTs) make up the OAVT RRP Team. These highly trained professionals are dispatched to collection locations to collect potential rabies specimens for testing when requested by one of the 29 Public Health Units in Ontario.

**To learn more about RVTs visit:**

[www.oavt.org](http://www.oavt.org)

**To learn more about the OAVT RRP visit:**

[www.oavtrrp.org](http://www.oavtrrp.org)

**Contact us:**

Phone: 1-844-872-2437

Email: [rrp@oavt.org](mailto:rrp@oavt.org)

### What We Do!

The OAVT Public Health Rabies Response Program (RRP) is a joint partnership between the OAVT and the Ministry of Health (MOH). The RRP provides the service of specimen collection and shipping for potential rabies exposures between animals and people.

### What happens after specimen collection?

Once an OAVT Rabies Response Program RVT Team Member has attended to collect the animal specimen for rabies testing the following will happen:

1. The specimen will be packaged and shipped to the Canadian Food Inspection Agency (CFIA) Laboratory for rabies testing.
2. Once the sample arrives at the CFIA laboratory it may take up to 72 hours for results to be returned to the public health unit that requested the test.
3. The public health unit staff will be in contact with the exposed person and anyone else involved in the investigation to relay the test results and any further instructions.

### What should be done with the animal remains after collection?

Remains that are left after collection are the responsibility of the animal/property owner to dispose of. Options for disposal include:

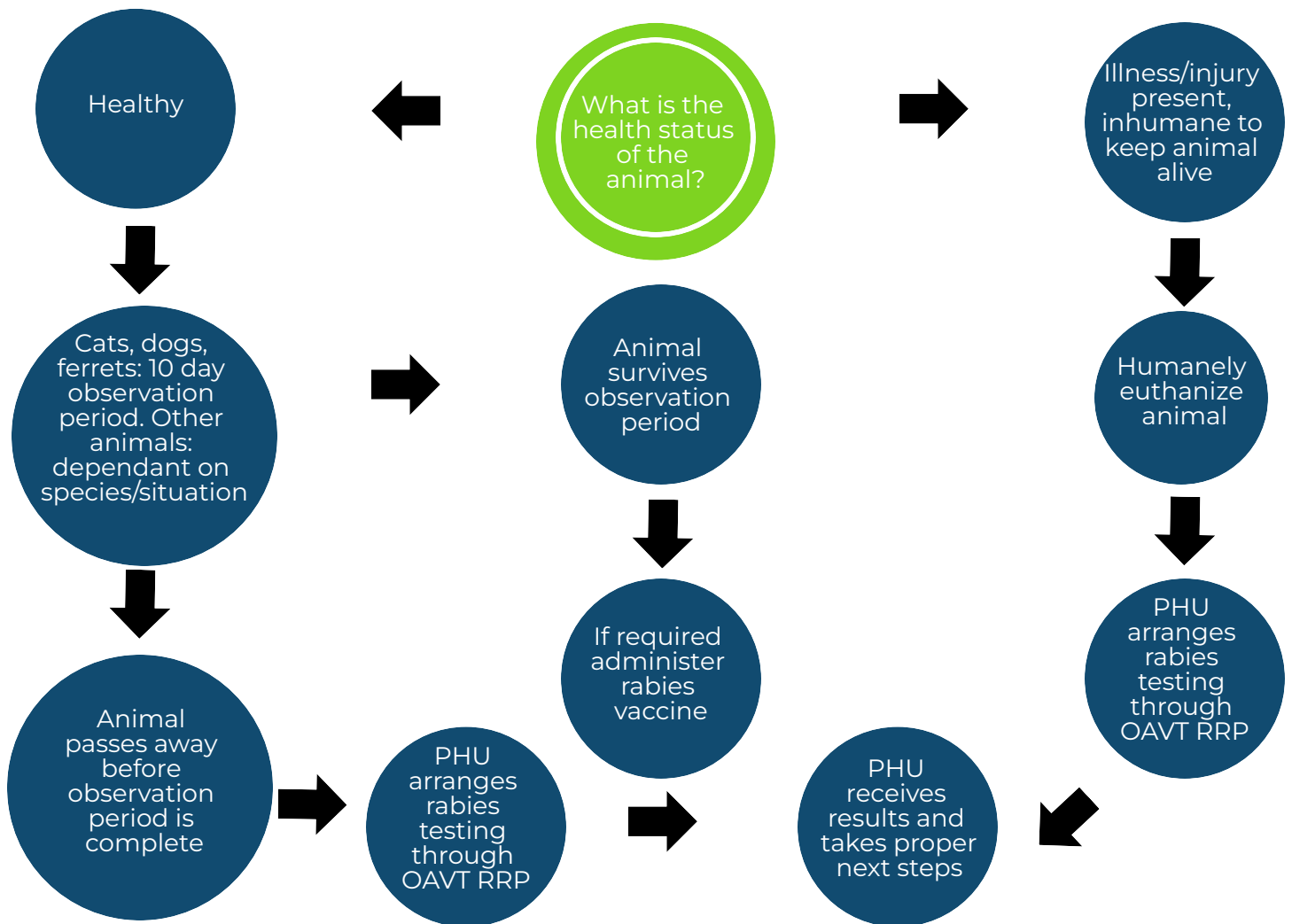
1. Burial in accordance with local municipal guidelines- can be completed immediately afterwards.
2. Cremation service arranged through a veterinary clinic or animal shelter. This can be completed immediately afterwards. **Please label the bag as "rabies suspect animal"** so the crematorium can ensure proper biosecurity measures are followed.
3. Large animal deadstock removal- only after a rabies negative result has been returned.

[www.oavtrrp.org](http://www.oavtrrp.org)



Do you know a person who has been bitten/scratched by an animal?  
**YOU MUST CONTACT YOUR LOCAL PUBLIC HEALTH UNIT IMMEDIATELY!**

What happens after you call Public Health?  
Public Health will complete an investigation and then...



## HEALTH PROTECTION AND PROMOTION ACT

A physician, registered nurse in the extended class, veterinarian, police officer or any other person who has information concerning either or both of the following shall, as soon as possible, notify the medical officer of health and provide the medical officer of health with the information, including the name and contact information of the exposed person:

1. Any bite from a mammal.
2. Any contact with a mammal that is conducive to the potential transmission of rabies to persons.

R.R.O. 1990, Reg 557, s. 2 (1); O Reg. 501/17, s. 1.

*This infographic is based on information provided in the MOH's Guidance Document for the Management of Suspected Rabies Exposures and reflects situations pertaining to human exposure. Situations of exposures involving domestic animals, that do not involve human exposure, should be directed to the animal owner's veterinarian. Veterinarians seeking additional guidance in these cases can contact OMAFA via the Agricultural Information Contact Centre at 877-424-1300.*